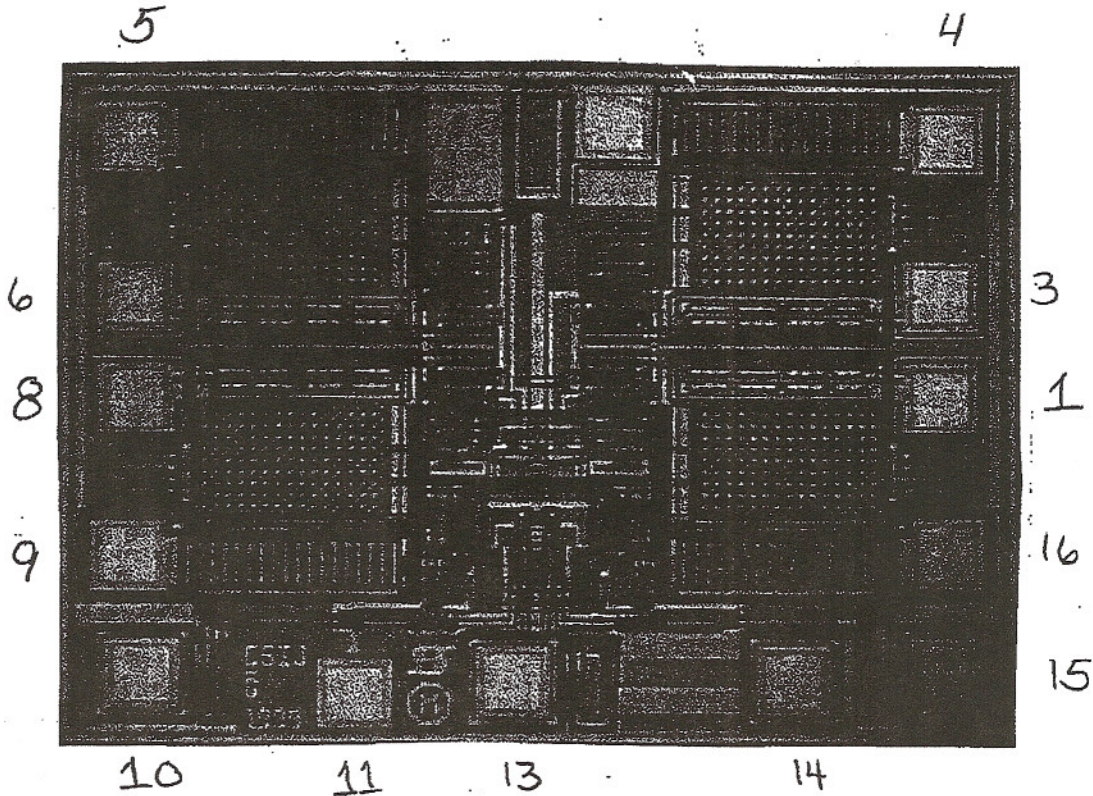




# Sierra Components, Inc.

2222 Park Place Building 3 Suite E • Minden, Nevada 89423  
Phone: 775.783.4940 Fax: 775.783.4947

Chip back potential is the level which bulk silicon is maintained by on-chip connection, or it is the level to which the chip back must be connected when specifically stated below. If no potential is given the chip back should be isolated.



**Top Material: AL**  
**Backside Material: SIL**  
**Bond Pad Size:**  
**Backside Potential:**  
**Mask Ref: CSIJ-A/C**

**APPROVED BY: RB**

**DIE SIZE : 70 X 52**

**DATE: 4/23/08**

**MFG: SILICONIX**

**THICKNESS: 15**

**P/N: DG403B**